

Colorful GF GT240-512M DDR3 N10 Spec

Model Name:

GF GT240-512M DDR3 N10

OverView:

Chip: **NVIDIA GeForce GT240 GPU**

Core Clock: **550MHZ**

Shader Clock: **1340MHz**

Memory Clock: **2000MHZ**

Memory Bandwidth: **128BIT**

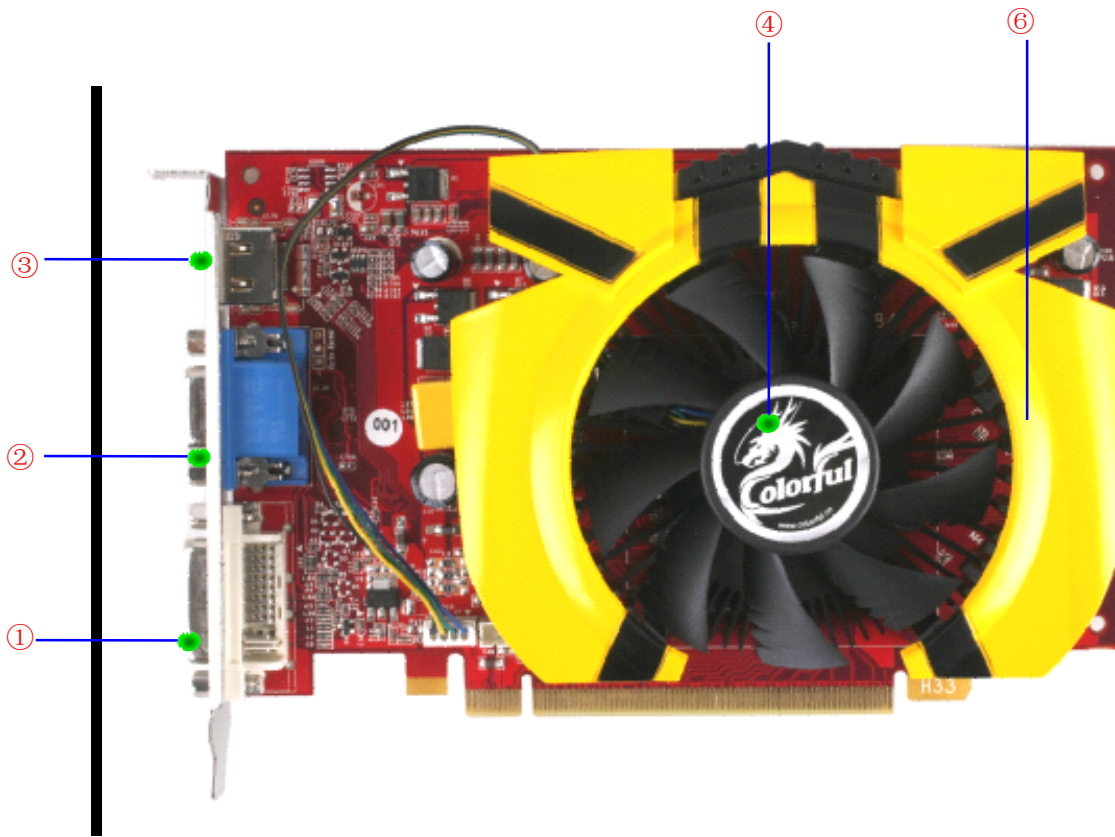
Memory Module: **1.0NS GDDR3**

Interface: **DVI+VGA+HDMI**

Features:

1. **NVIDIA new generation technique design, the first 40nm GPU for personal computer. Lower power consumption and lower thermal.**
2. **Using BUMBLEBEE cooler, with PWM function, quiet and efficient.**
3. **With 512M DDR3 memory onboard, and provide native HDMI output port.**
4. **Supports NVIDIA® PureVideo® HD Technology, that delivers unprecedented picture clarity, smooth video, accurate color, and precise image scaling for movies and video.**
5. **Full support PCIE 2.0, that is twice than that of first generation PCI Express.**
6. **NVIDIA CUDA™ Technology supported.**
7. **The Discrete, Programmable Video Processor in GPU that provides superb picture quality and ultra-smooth movies with 100% offload of H.264 video decoding from the CPU and significantly reduced power consumption.**





1. Dual-link DVI 1

3. VGA port

5. 1.2ns GDDR3 memory

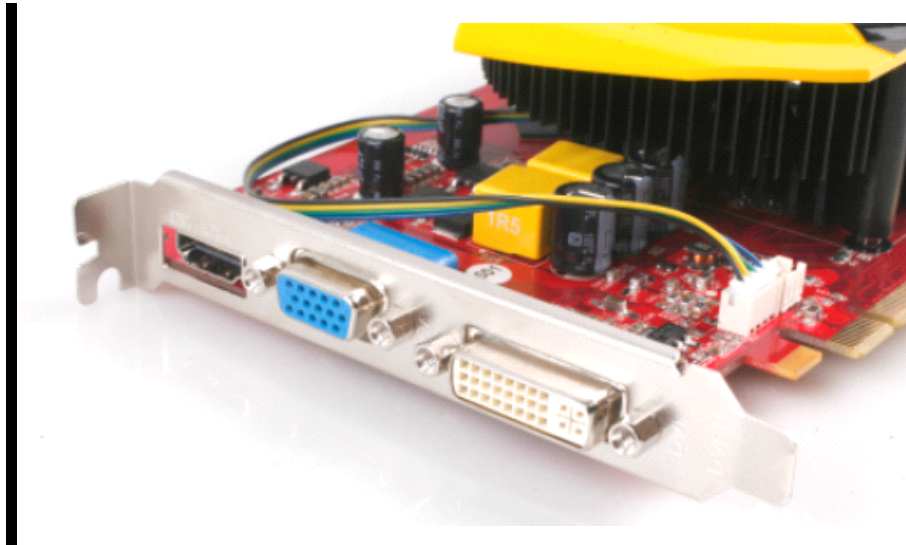
2. HDMI port

4. Efficient fan

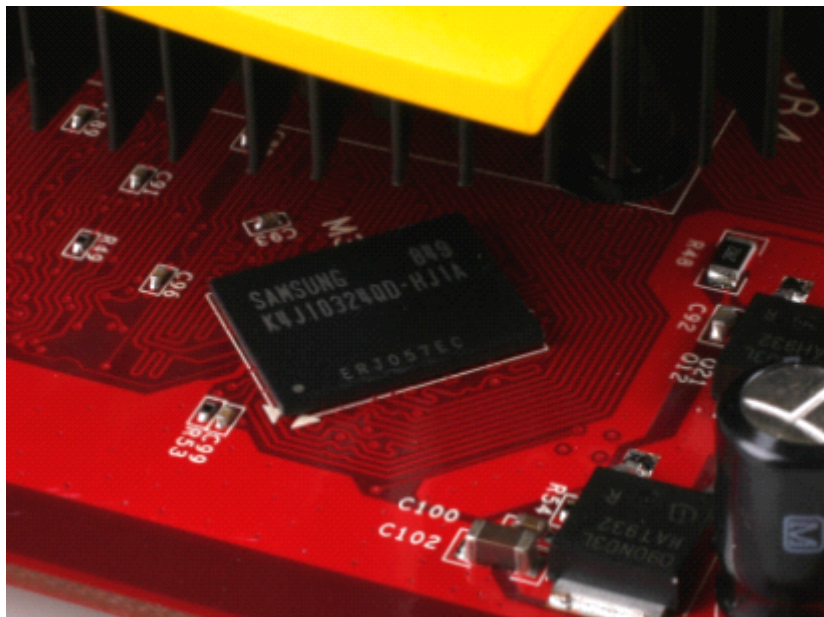


Angle View

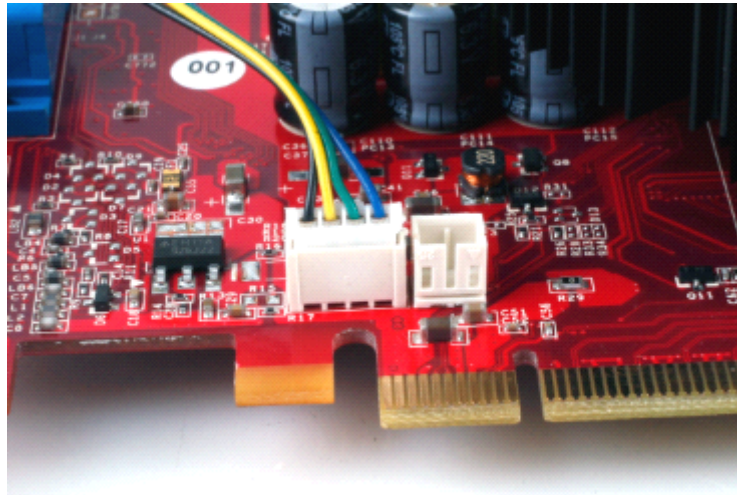
Parts of the graphics card:



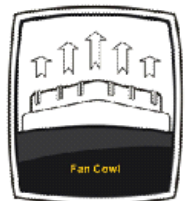
Provide DVI + VGA +HDMI ports,. Unlike the old generation 55nm graphics cards, the GT240 integrate audio decode just like the ATI, it means you needn't to connect the SPDIF-IN cable for the audio output of HDMI.



1.0ns Memory



4-pin PWM fan



Using BUMBLEBBE Cooler, with Air Guided Notches, Fan Cowl and Step Design

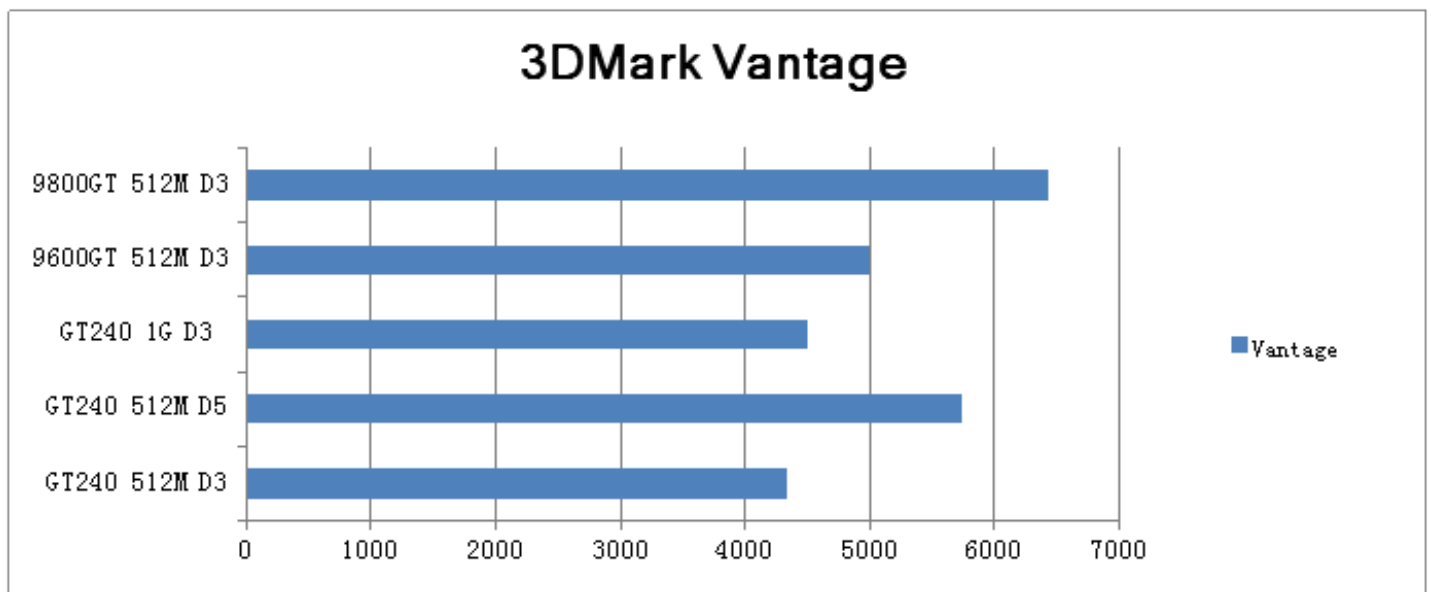


The Packaging and the card

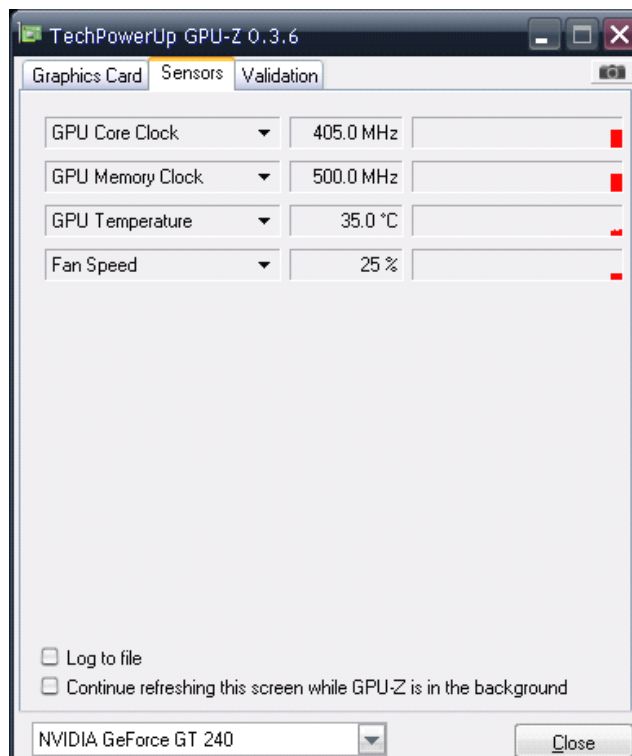
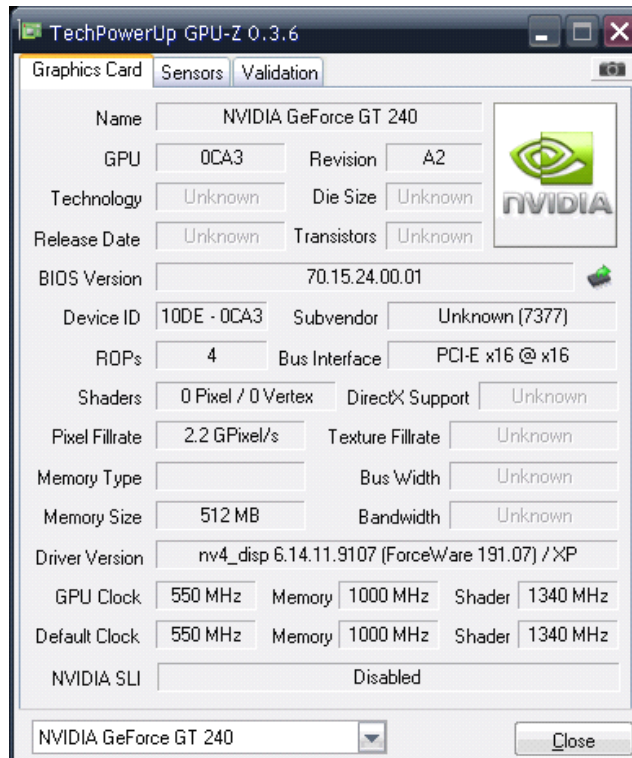
Accessories: Diver CD, User's Guider

Performance*

***The test result is for reference only.**



GPU-Z for reference



Startup Temperature 35°C



Full load MAX 61°C