

## Colorful GF GTS250 1G DDR3 R08 3F Spec

### Model Name:

GF GTS250 1G DDR3 R08 3F

### OverView:

Chip: **NVIDIA GTS250 GPU**

Core Clock: **740MHZ**

Shader Clock: **1836MHZ**

Memory Clock: **2200MHZ**

Memory Bandwidth: **256BIT**

Memory Module: **GDDR3 FBGA 0.8NS 1G**

FAN Speed: **2500rpm ± 10%**

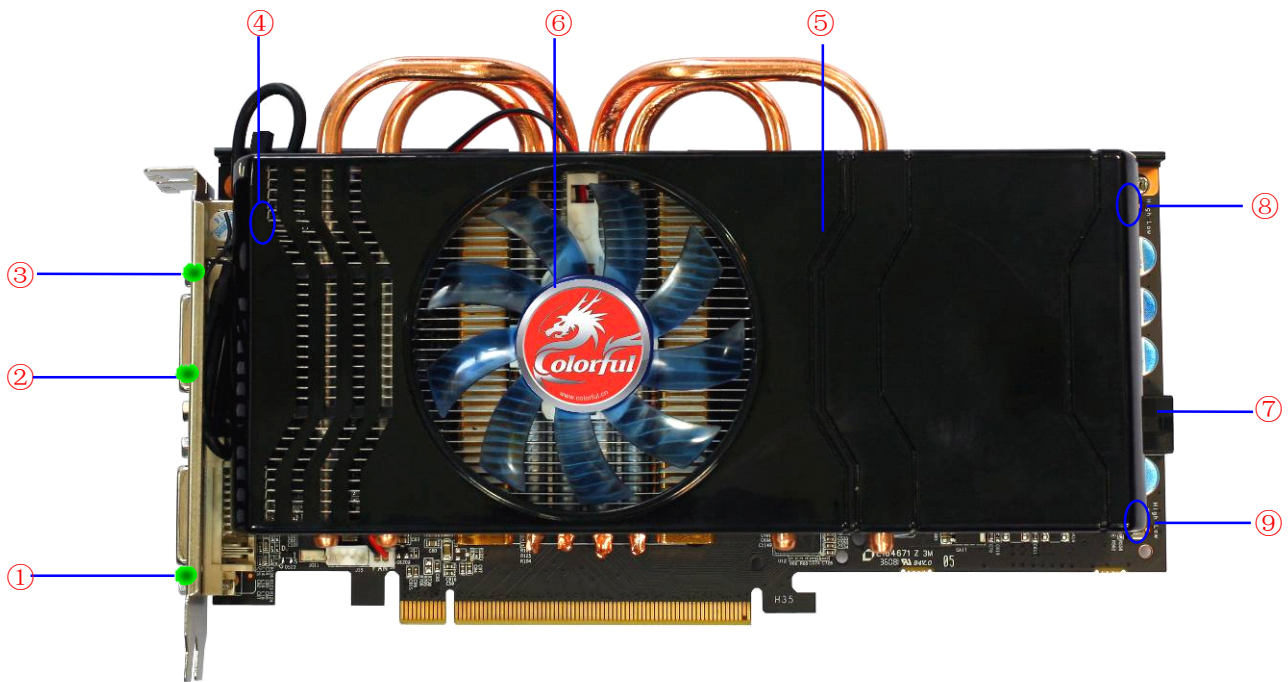
Noise Level: **29dB ± 10%**

Interface: **DVI+DVI+HDMI**

### ADVANTAGES:

1. Based on black PCB design and black cooler, that makes the card stylish and attractive .
2. With high quality cooling system: 4 pure copper heat-pipes and pure copper base, quiet and efficient.
3. With UVC (GPU Voltage Control)and VVC(VGA memory Voltage Control) switches onboard, they are used for adjusting the voltage of the core and memory, in order to enhance overclocking capability.
4. Use high-quality Ferrite Core Chokes and All-Solid Capacitors to ensure the graphics card a longer life.
5. Support for NVIDIA® PureVideo® HD Technology
6. PCI Express 2.0 Support, NVIDIA® PhysX™-Ready.
7. Support NVIDIA 3-way SLI® Technology





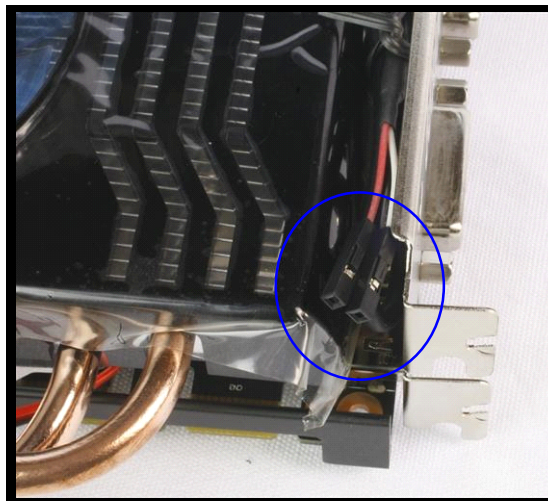
- 1. Dual-link DVI port**
- 3. HDMI port**
- 5. GDDR3 0.8ns**
- 7. 6-pin power connector**
- 9. UVC Control**

- 2. Dual-link DVI port**
- 4. SPDIF connector**
- 6. Dual fan cooling system**
- 8. VVC Control**

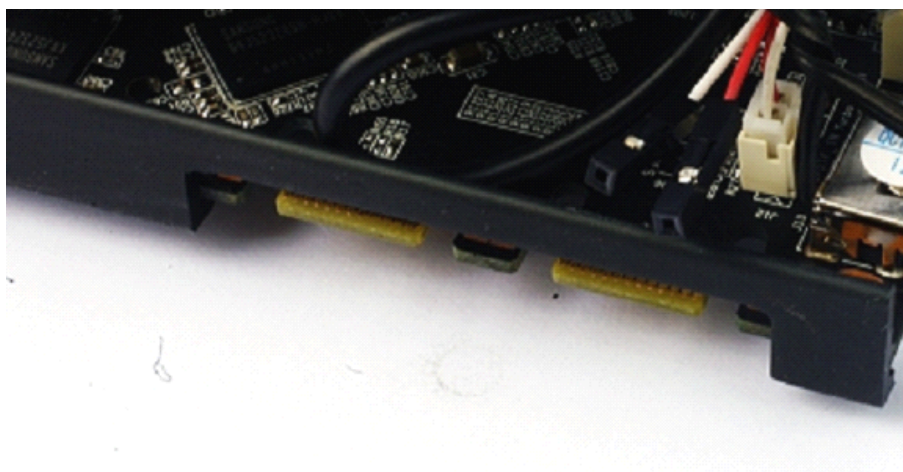
**Parts of the graphics card:**



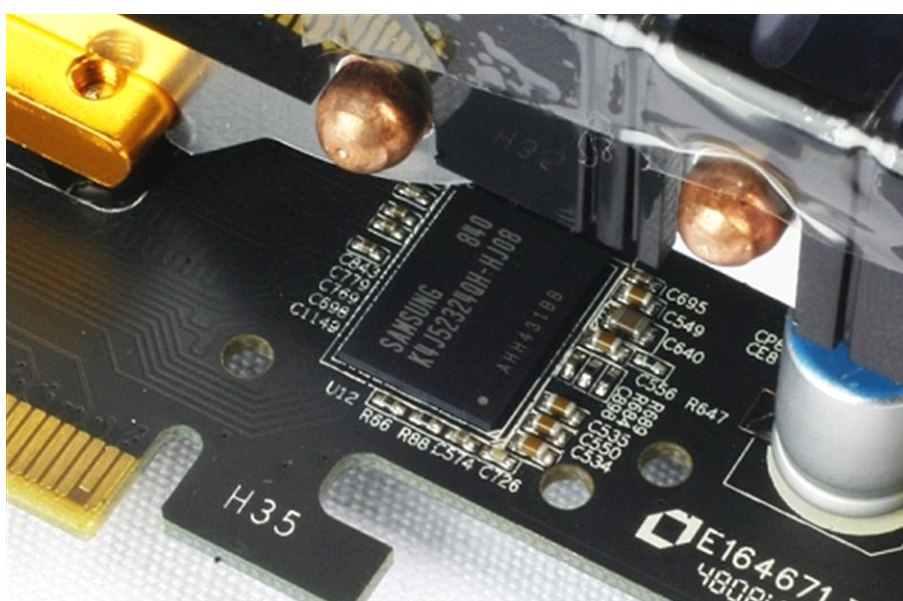
**Output: DVI+DVI+HDMI**



The 2-pin SPDIF-IN pinhead is for the audio output of the HDMI. Please connect the other end to the SPDIF-OUT pinhead of the motherboard (**Please refer to the definition of SPDIF pinhead in the motherboard manual**). The RED cable is data cable, and the WHITE cable is GND.



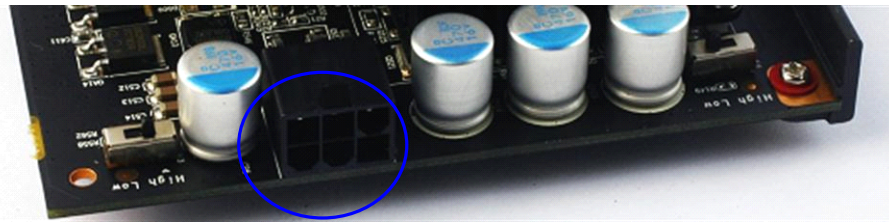
3-way SLI Ready



SAMSUNG DDR3 0.8ns memory



4 pure copper heat pipes



**6-pin power supply connector**



**VVC Switch and UVC Switch**

The VVC and UVC are used for adjusting the memory voltage and core voltage. When slide to the right-side, the voltage will be added, and the overclocking ability will be improved.

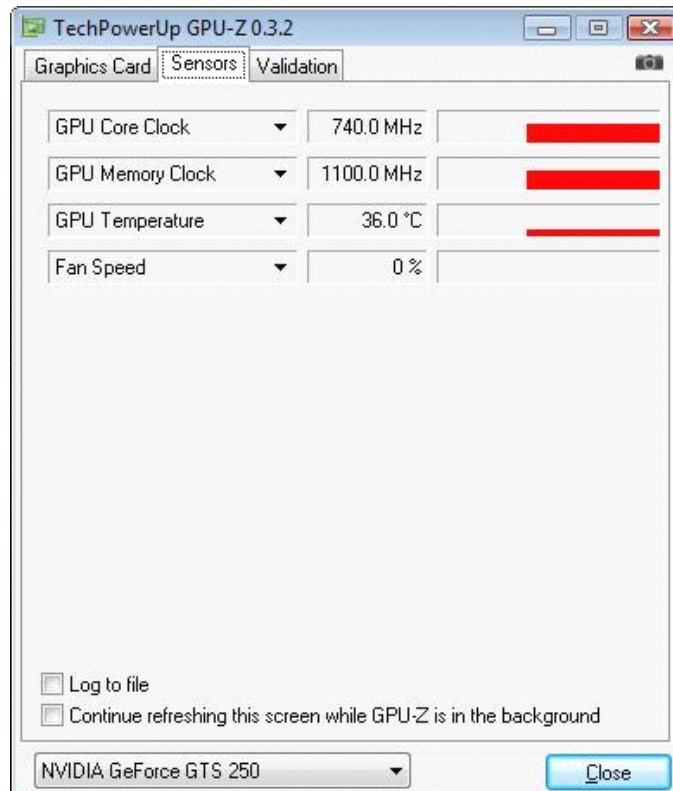


**Accessories: 1\* User's Guider, 1\* Driver CD, 1\* 6-pin Power Commutator cable, 1\* DVI to VGA adapter.**

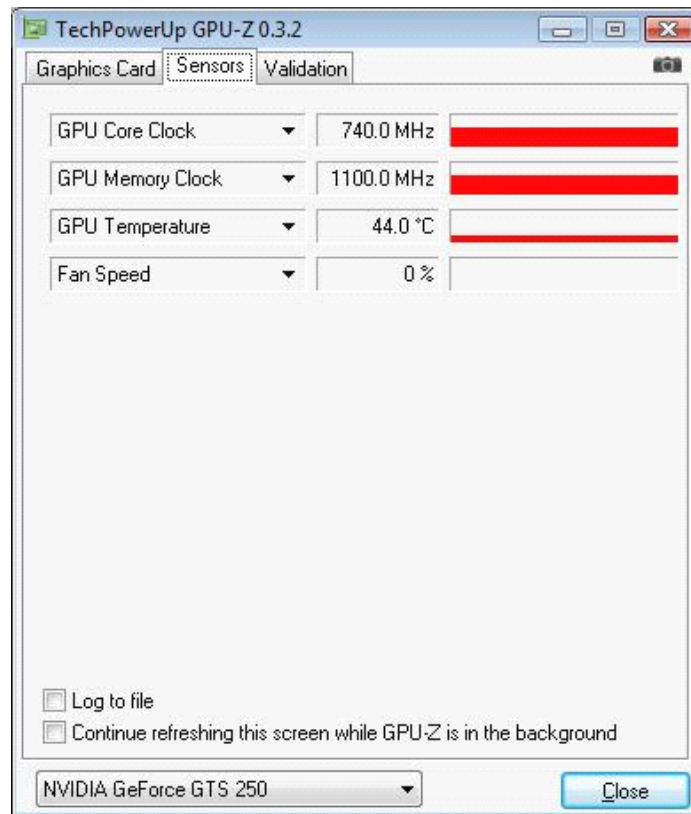


The packaging

**GPU-Z Reference**



### Start up temperature



### When run 3D mark 06