

Colorful iGame4890-1G DDR5 D08 Spec

Model Name:

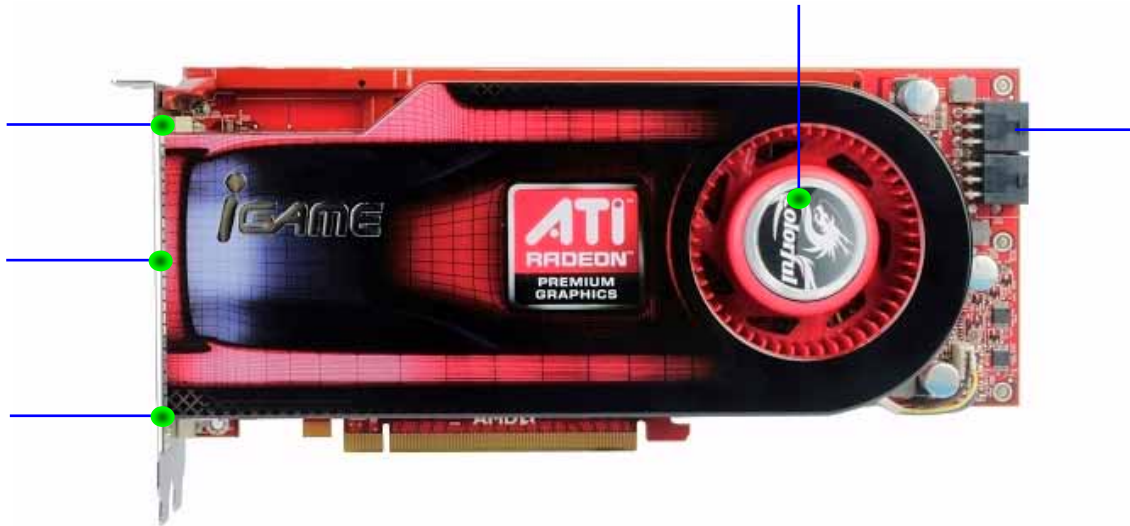
iGame4890-1G DDR5 D08

OverView:

- ✿ Chip: **ATI RADEON 4890 chip (RV790XT)**
- ✿ Core Clock: **850MHZ**
- ✿ Memory Clock: **3900MHz**
- ✿ Memory Bandwith: **256BIT**
- ✿ Memory Module: **GDDR5 FBGA 40X 1G**
- ✿ Interface: **DVI+DVI+ HDTV-OUT**

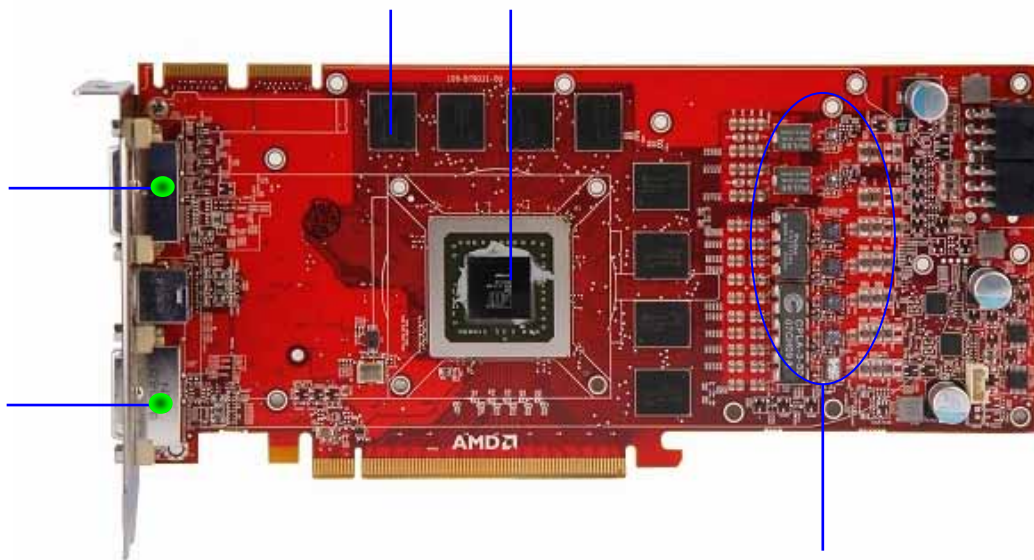
Features:

1. ATI High-end graphics card, with the latest DDR5 40x memory module onboard,
2. Based on 55ns techniques, the heat is highly reduced.
3. Supports ATI Avivo™ HD Video and Display Platform, integrated Unified Video Decoder 2 (UVD 2), which frees up your CPU for other tasks so you get The Ultimate Visual Experience™ for the most processing-intensive content.
4. Support ATI PowerPlay Technology.
5. Full support PCIE 2.0, which is twice than that of first generation PCI Express.
6. Supports Microsoft DirectX® 10.1, you can play today while preparing for tomorrow with state-of-the-art DirectX 10.1 graphics capabilities.
7. Support HDMI (Via DVI-HDMI adapter), you can enjoy the latest audio technologies using HDMI with 7.1 digital surround sound support. Also, xvYCC support allows the user to enjoy a wider range of colors when connected to a capable HDTV.



- 1. Dual Link DVI1 port
- 3. Dual Link DVI2 port
- 5. Dual 6-pin power connectors

- 2. HDTV-OUT port
- 4. High efficient cooling system



- 1. Metal-enclosed DVI port
- 3. RV790XT chip

- 2. Qimonda DDR5 40x memory
- 4. Strong digital power supply system

Parts of the graphics card:



Back view



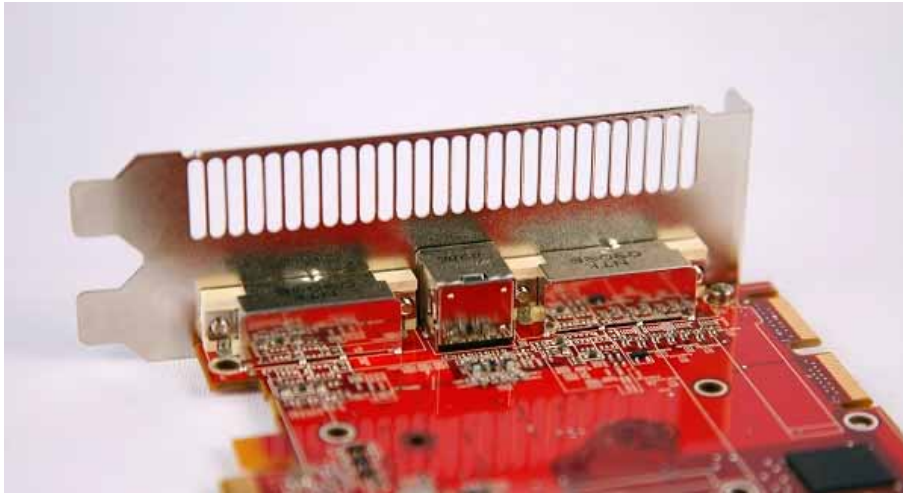
Angle view



Angle view



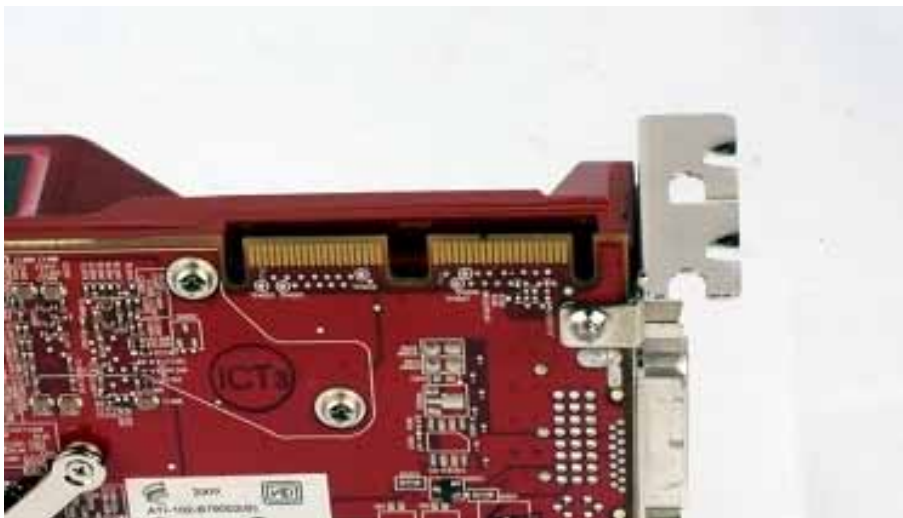
Output: DVI+DVI+HDTV-OUT



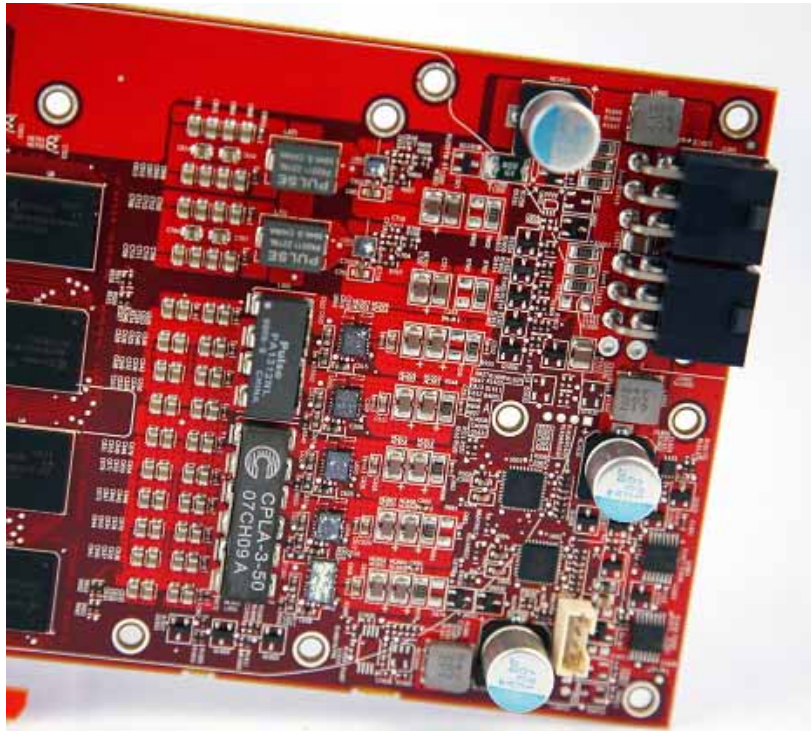
Metal-enclosed DVI port to ensure purer signals



Qimonda DDR5 40x memory



CrossFire Ready



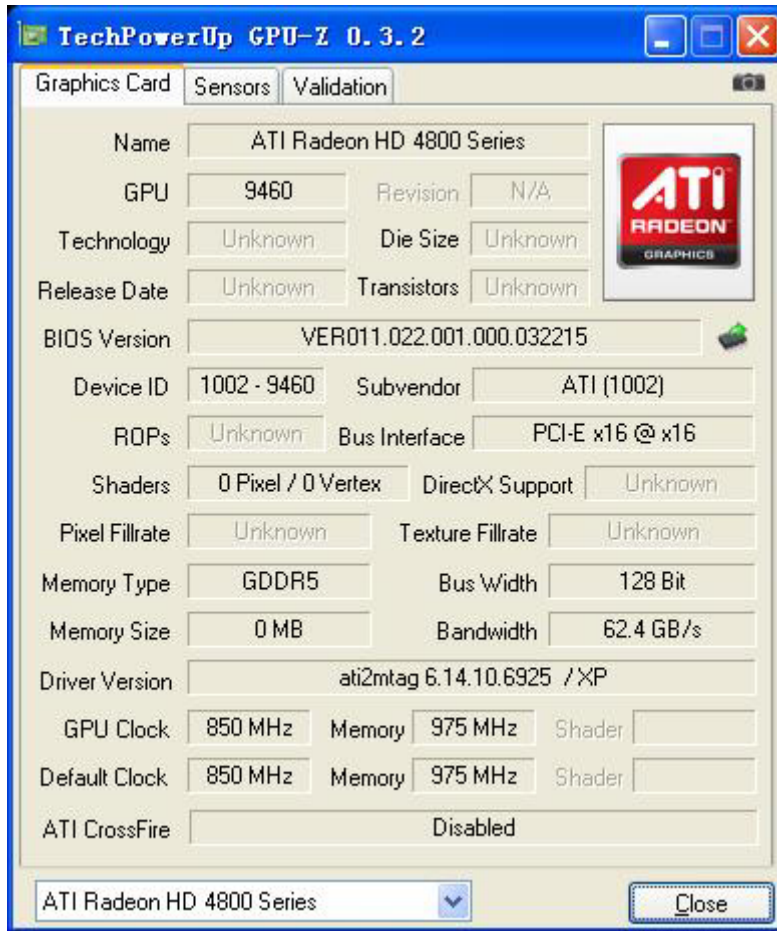
Use high quality components, 6+2 phase power supply



The packaging and the card

Accessories: Diver CD, User's Guider, 2* 6-pin additional power cable, DVI to VGA adapter, DVI to HDMI adapter, HDTV cable, HDTV adapter

GPU-Z reference:



GPU-Z could not recognize the 4890 chip, and showed wrong message of the bus width (256bit actually).