

## Colorful GF9800GT-1G DDR3 N10 Spec

### Model Name:

**GF9800GT-1G DDR3 N10**

### OverView:

Chip: **NVIDIA GeForce9800GT GPU (G92)**

Core Clock: **600MHZ**

Shader Clock: **1500MHZ**

Memory Clock: **1800MHZ**

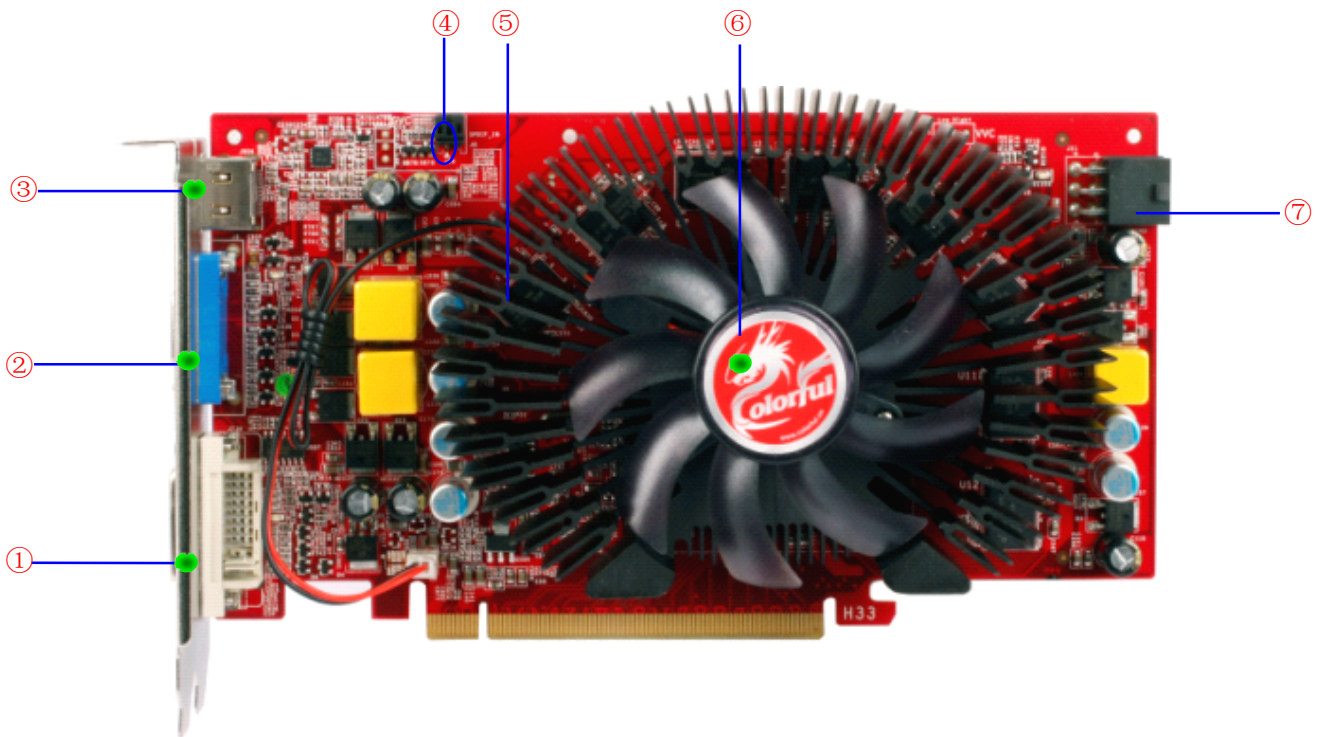
Memory Bandwidth: **256BIT**

Memory Module: **QIMONDA GDDR3 FBGA 1.0NS**

Interface: **DVI+VGA+HDMI**

### ADVANTAGES:

1. **High cost-effective, 512M DDR3 1.0 ns memory.**
2. **Using high quality inductors and capacitors, ensure the graphics card steadily working and longer lifespan.**
3. **Using low noise & high-efficient fan to ensure the thermal performance.**
4. **Supports NVIDIA® PureVideo® HD Technology, that delivers unprecedented picture clarity, smooth video, accurate color, and precise image scaling for movies and video.**
5. **Full support PCIE 2.0, that is twice than that of first generation PCI Express.**
6. **NVIDIA CUDA™ Technology supported.**
7. **The Discrete, Programmable Video Processor in GPU that provides superb picture quality and ultra-smooth movies with 100% offload of H.264 video decoding from the CPU and significantly reduced power consumption.**



**1. Dual-link DVI1**

**3. HDMI port**

**5. SAMSUNG GDDR3 1.0ns**

**7. 6-pin power connector**

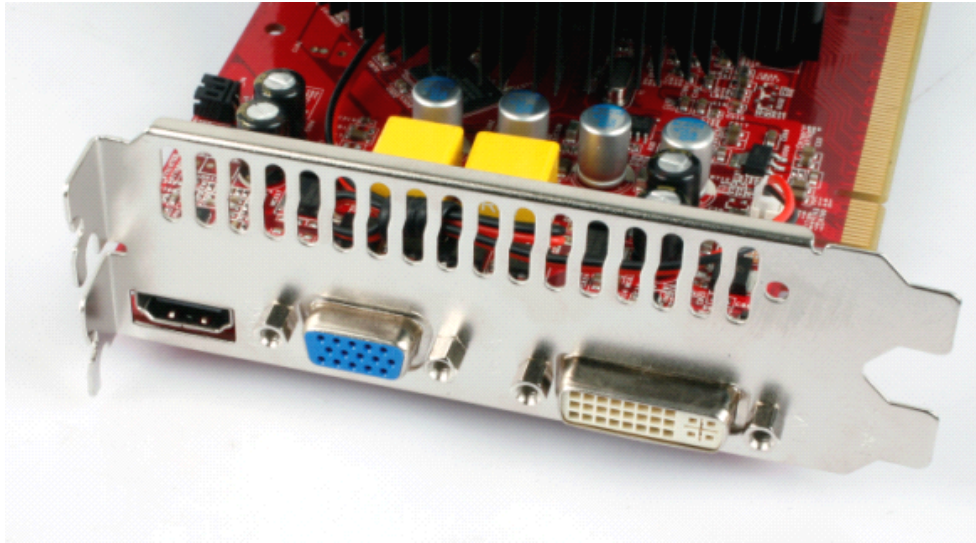
**2. VGA port**

**4. SPDIF connector**

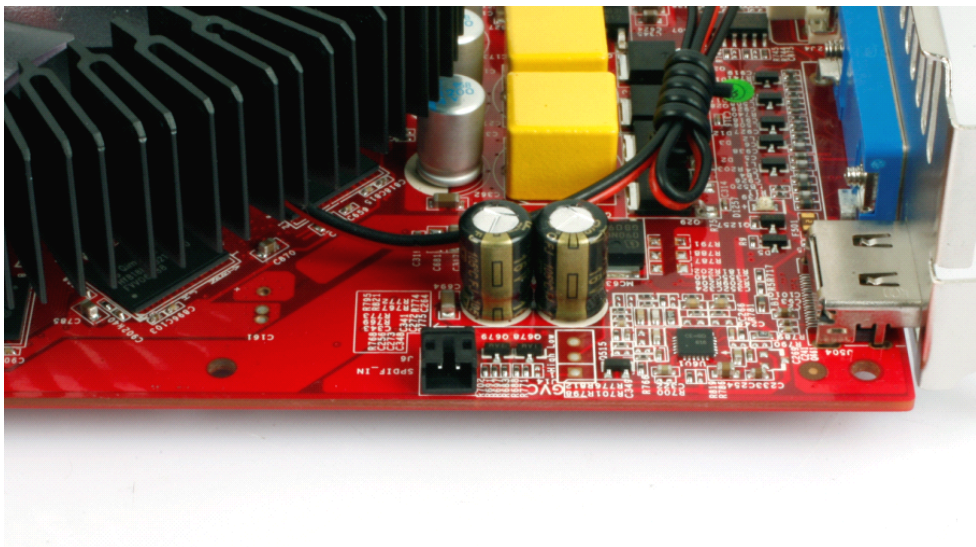
**6. High efficiency cooling system**



Parts of the graphics card:



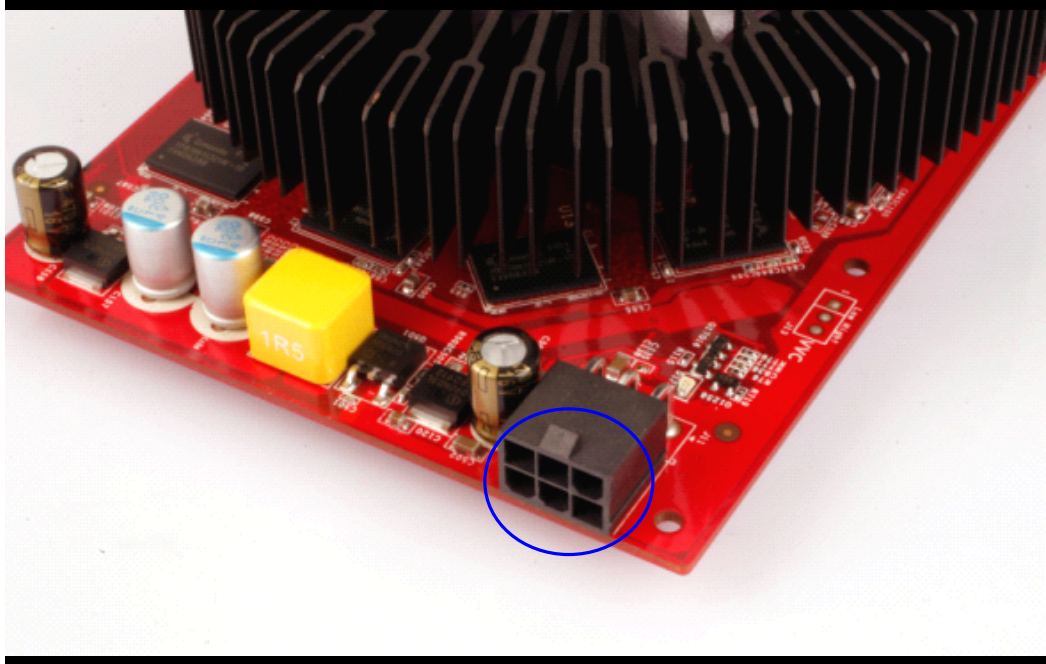
**Output: DVI+VGA+HDMI**



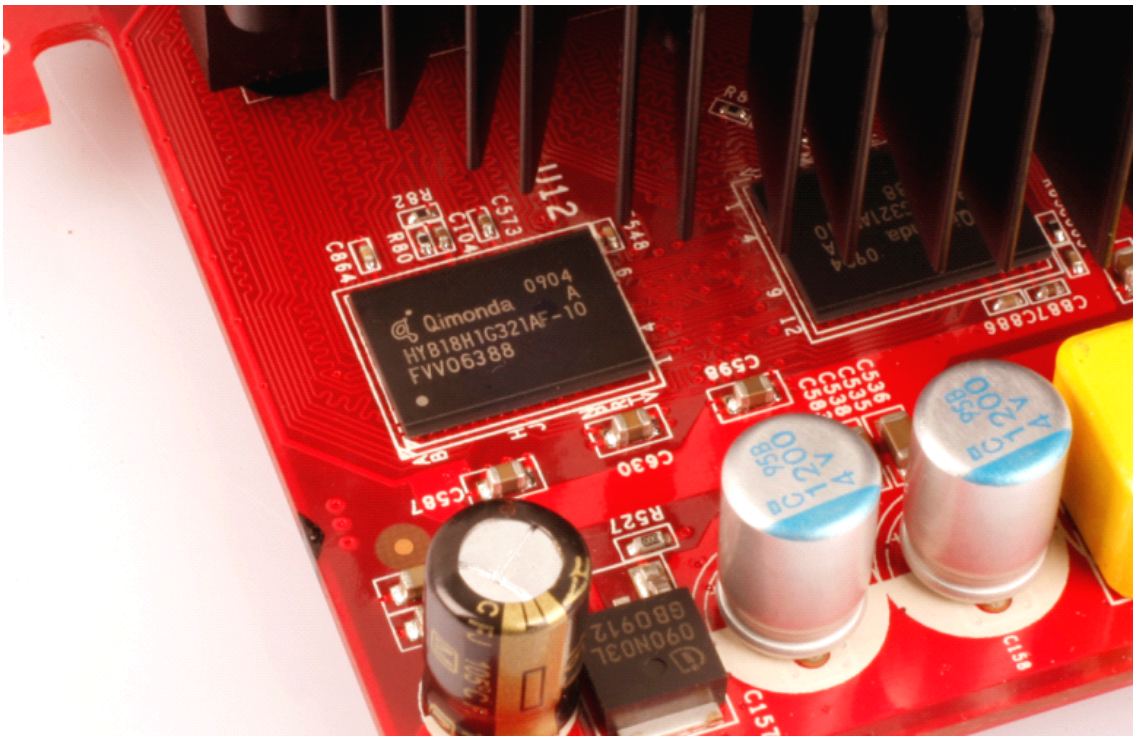
**SPDIF connector**

The 2-pin SPDIF-IN pinhead is for the audio output of the HDMI. Please use the SPDIF connecting cable in the accessories, one end connect to the graphics card, the other end connect to the SPDIF-OUT pinhead of the motherboard (**Please refer to the definition of SPDIF pinhead in the motherboard manual**). Usually, The RED cable is data cable, and the WHITE cable is GND.





**6-pin power supply connector**



**Used high quality Qimonda 1.0ns GDDR3 memory modules**

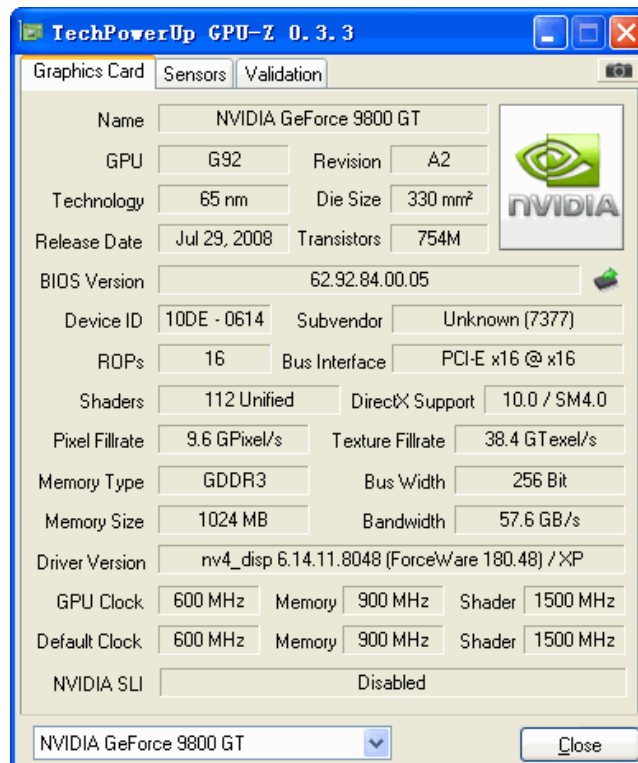


**Accessories: 1\* User's Guider, 1\* Driver CD, 1\* 6-pin Power Commutator cable, 1\* DVI to VGA adaptor.**

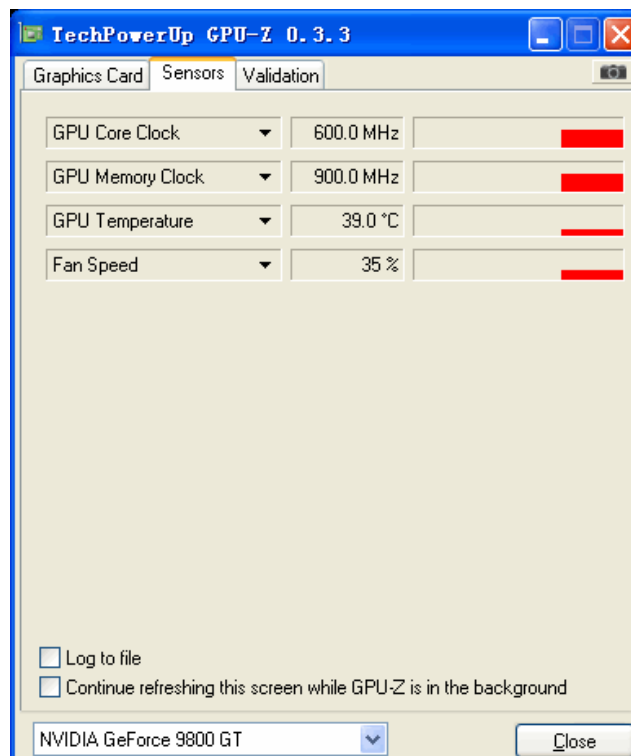


**The packing**

**GPU-Z reference:**



GF9800GT 512M DDR3



Start up temperature