

Colorful GF9800GT-512M DDR3 H10 Spec

Model Name:

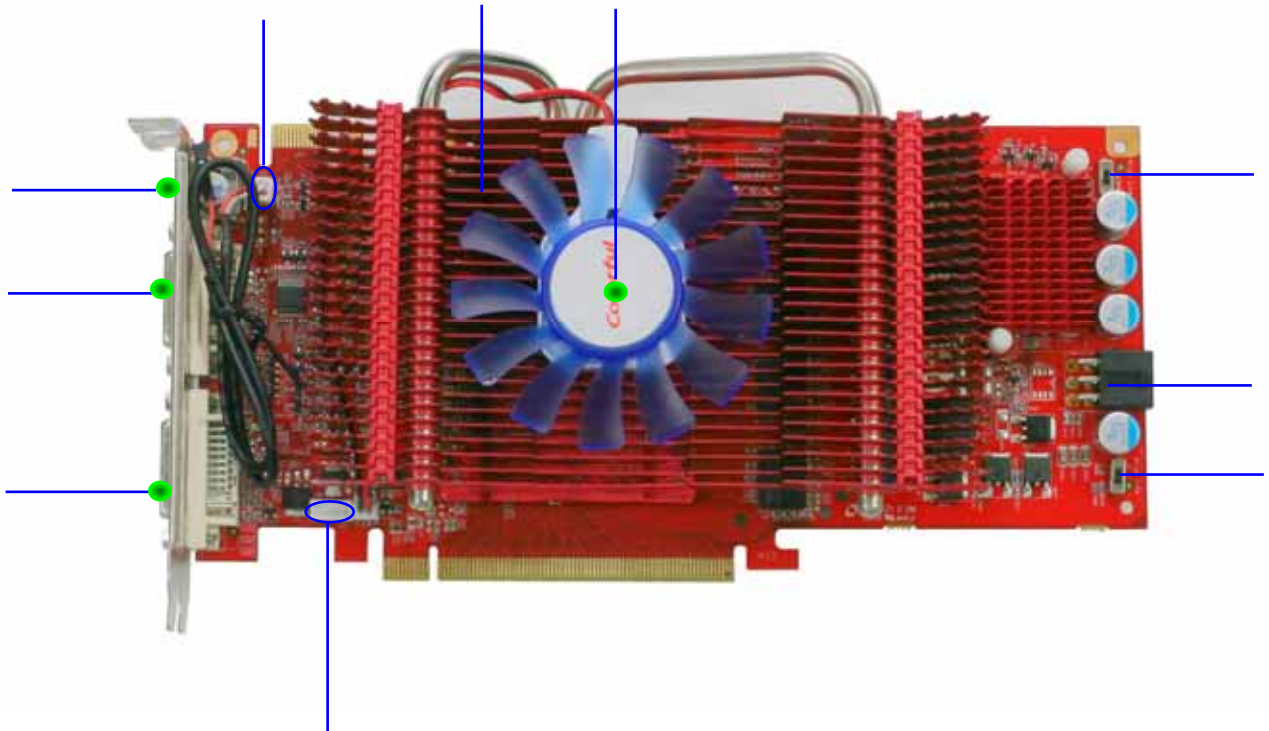
GF9800GT-512M DDR3 H10

OverView:

- ✿ **Chip: NVIDIA GeForce9800GT GPU (G92)**
- ✿ **Core Clock: 600MHZ**
- ✿ **Shader Clock: 1500MHZ**
- ✿ **Memory Clock: 1800MHZ**
- ✿ **Memory Bandwith: 256BIT**
- ✿ **Memory Module: SAMSUNG GDDR3 FBGA 1.0NS**
- ✿ **Interface: DVI+DVI+HDMI**

ADVANTAGES:

1. With 2 swiches beside the power supply system. The are used for adjusting the voltage of the core and memory, in order to have a better overclocking ability.
2. With high quality heat-pipe cooling system, start up temperature is only 42 degrees Celsius, and in the 3D Bench Mark 06 is only 51 degrees Celsius (Ambient temperature is 25 degrees Celsius).
3. Using high quality inductors and capatitors, ensure the graphics card steadily working.
4. Support for NVIDIA® PureVideo® HD Technology
5. PCI Express 2.0 Support, NVIDIA® PhysX™-Ready
6. Support NVIDIA 2-way SLI® Technology.



- 1. Dual-link DVI1
- 3. HDMI port
- 5. SAMSUNG GDDR3 1.0ns
- 7. Switch 1
- 9. Switch 2

- 2. Dual-link DVI2
- 4. SPDIF connector
- 6. High efficiency cooling system
- 8. 6-pin power connector
- 10. 4-pin fan connector

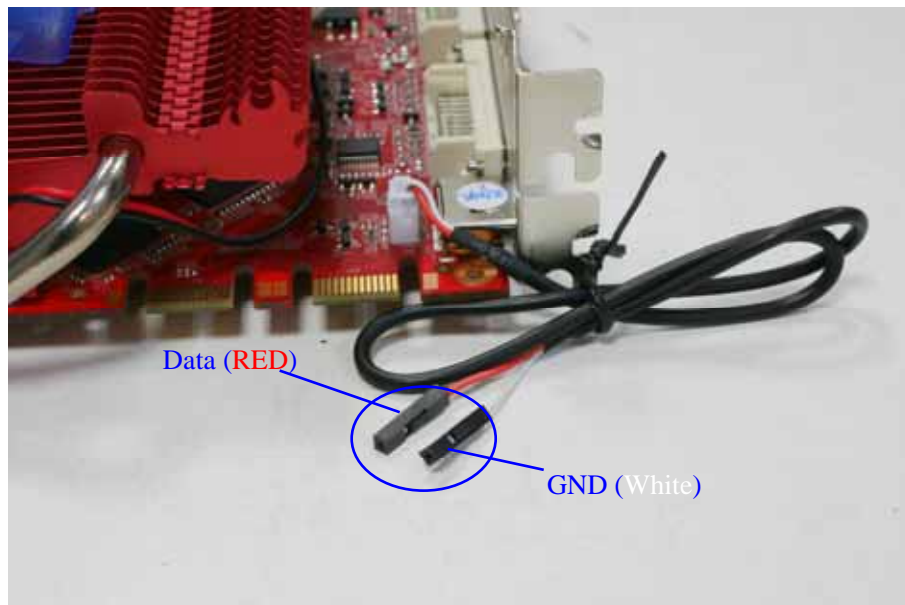


Uninstall the cooler

Parts of the graphics card:



Output: DVI+DVI+HDMI



The 2-pin SPDIF-IN pinhead is for the audio output of the HDMI. Please use the SPDIF connecting cable in the accessories, one end connect to the graphics card, the other end connect to the SPDIF-OUT pinhead of the motherboard (**Please refer to the definition of SPDIF pinhead in the motherboard manual**). The RED cable is data cable, and the WHITE cable is GND.



Switch 1



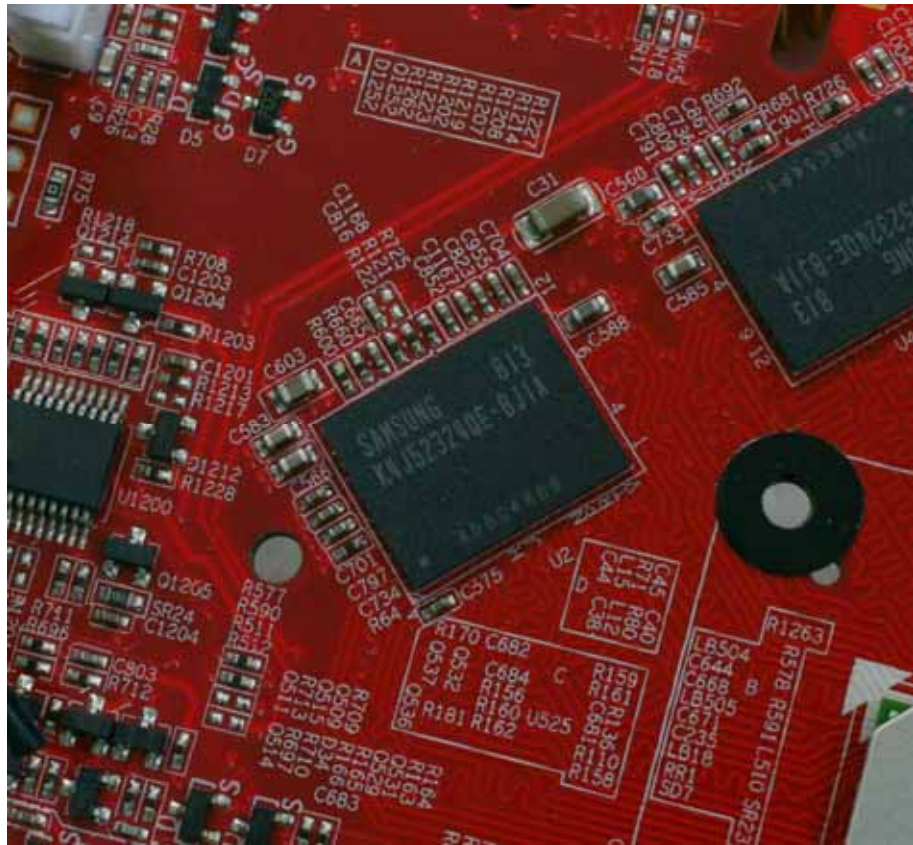
Switch 2

The 2 switches are used for adjusting the memory voltage and core voltage. When switch to the top, the voltage will be added, and the overclocking ability will be improved.

Caution: The system might come to unstable when overclocking, so normal users please keep the default clock and voltage.



6-pin power supply connector



Used 8pcs high quality SAMSUNG 1.0ns GDDR3 memory modules



9800GT GPU



2-way SLI



High efficiency fan with heat pipe



3+1 phases Power Supply System: Using high quality inductors and capacitors

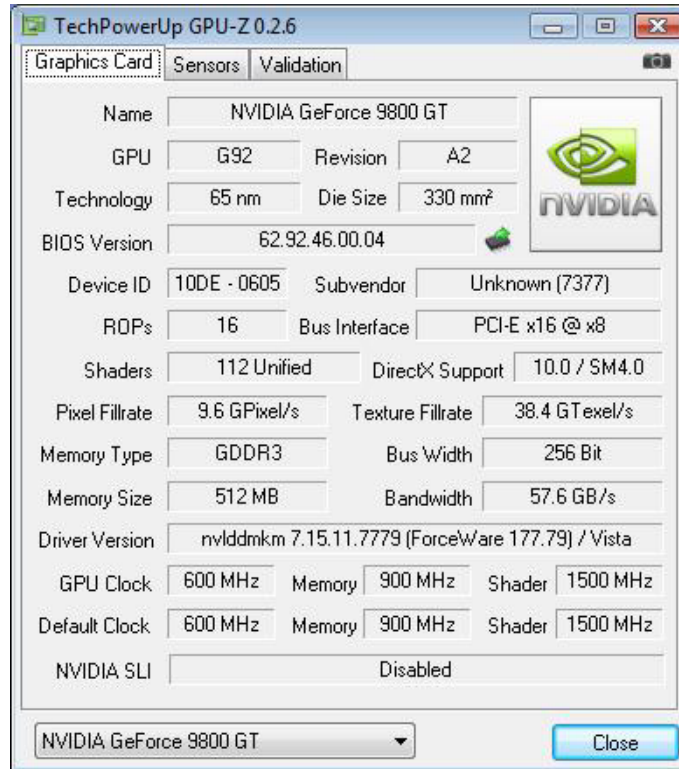


Accessories: 1* User's Guider, 1* Driver CD, 1* 6-pin Power Commutator cable, 1* DVI to VGA adaptor.

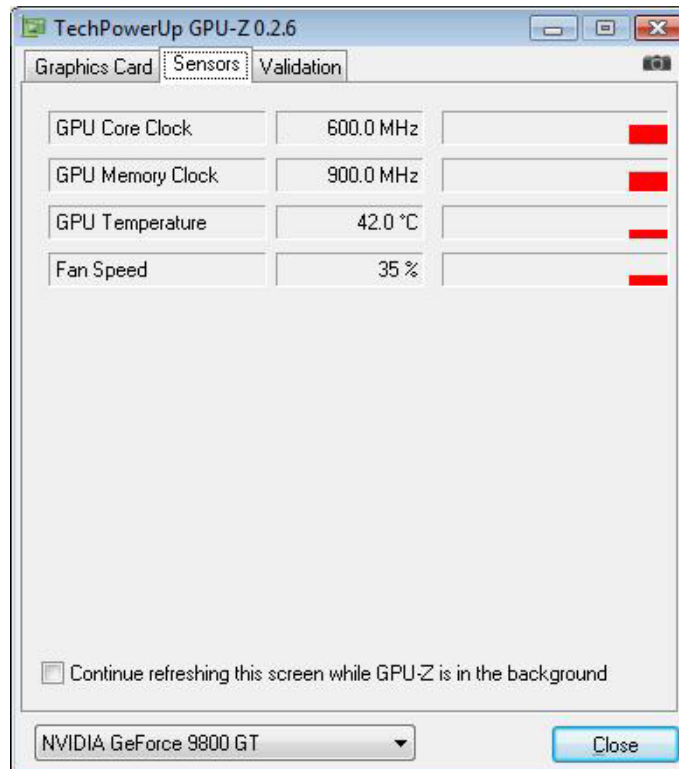


The packing

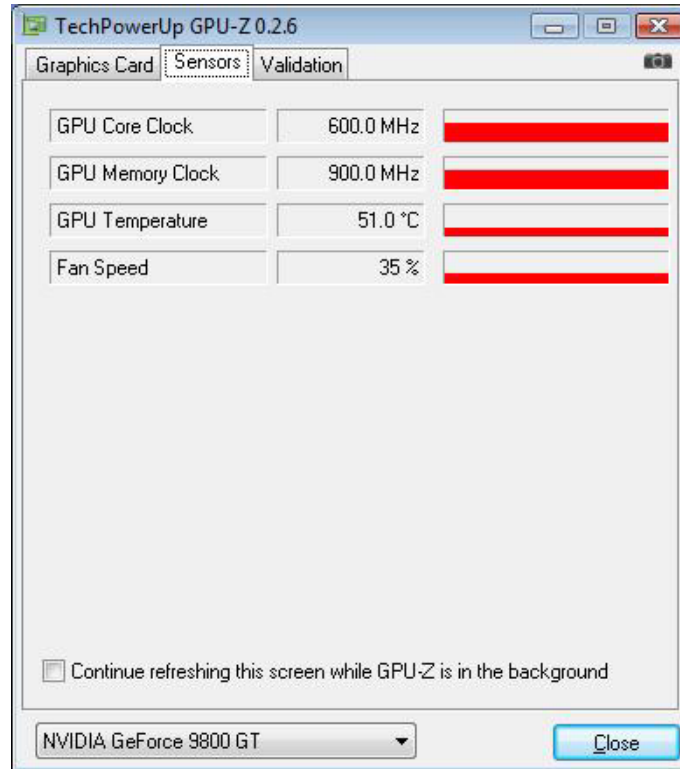
GPU-Z reference:



GF9800GT 512M DDR3



42 when start up



51 when run the 3D Bench Mark